

## **THE TECHNOLOGY CONSORTIUM, LTD.**

***Are you frustrated by production problems?***

***Are you trapped by a process or out-of-control operating expense?***

***Do you want to increase profits by reducing operating costs?***

### **WE MANUFACTURE SOLUTIONS...**

***TTC specializes in unique process and product solutions that are guaranteed to...***

- ◆ Reduce manufacturing, operating, and equipment costs***
- ◆ Increase operator safety and efficiency***
- ◆ Increase your product quality***
- ◆ Make your life easier***

### **Design Engineering Services**



***We specialize in machine design, process refinement, equipment analysis, refinements, and all mechanical, electrical, & structural engineering services. We also offer total document control services from drawing generation to scanning, printing, archiving, and storage.***

### **Automation, Machine Design & Fabrication**



***We are experts at automating unique design solutions for difficult problems. We design and supply all types of industrial applications including automotive and aseptic assembly, production, and process equipment.***

# The Technology Consortium, Ltd.

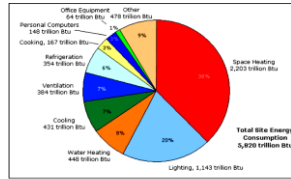
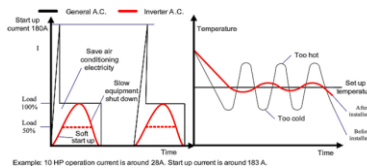
Website: [www.4TTC.net](http://www.4TTC.net)

**IF YOUR EQUIPMENT REQUIRES MOTORS, YOU ARE WASTING MONEY!**

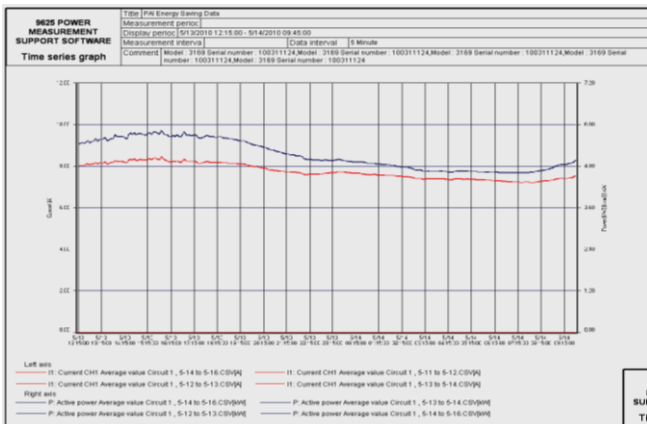
**The Technology Consortium is proud to introduce H.E.L.P! This High-Efficiency-Local-Processor (Demand/Reaction) system is newly developed and proven to deliver unprecedented savings.**



Electricity saving and constant temperature comparison table



**Today's Energy Savings programs are as important as your manufacturing process; this equipment will reduce operating expenses. These Certified installation results attest to our typical savings.**

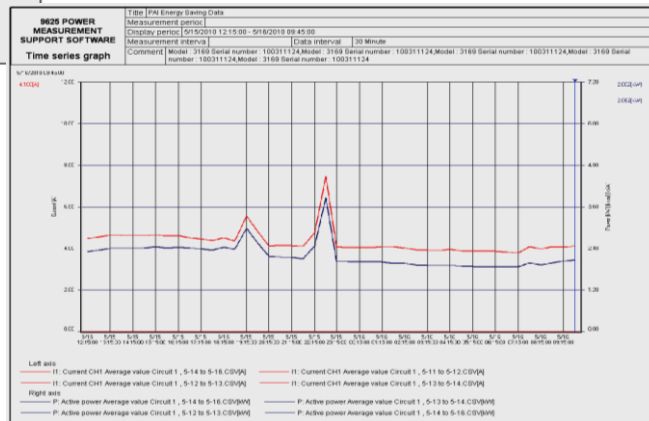


**<<<Normal Operation:**

Amperage: 7.831,  
Active Power (kW)-5.124,  
Reactive Power (kvar)-4.288,  
Power Factor-0.7649,  
Apparent Power (KVA)-6.689,  
Voltage Unbalance Factor: 0.23

**Energy Savings Mode:>>>**

Amperage: 4.949,  
Active Power (kW): 2.197,  
Reactive Power (kvar): 0.153,  
Power Factor: 0.9976  
Apparent Power (KVA): 2.202,  
Voltage Unbalance Factor: 0.20



**Reduce your electrical consumption/costs from twenty to forty percent (20-40%)!**

**Qualifies for incentive programs and reduced "Carbon Footprint" LEED Credits...**

**Typical equipment ROI is less than Two Years...**

The Technology Consortium, Ltd.  
(Office) (864) 277-1645

[www.4TTC.net](http://www.4TTC.net)

[Ronhoffman@4TTC.net](mailto:Ronhoffman@4TTC.net)  
(Cell) (864) 884-9749

**OTHER QUALITY TTC OFFERINGS**

**Industrial Conveying Equipment & Systems**



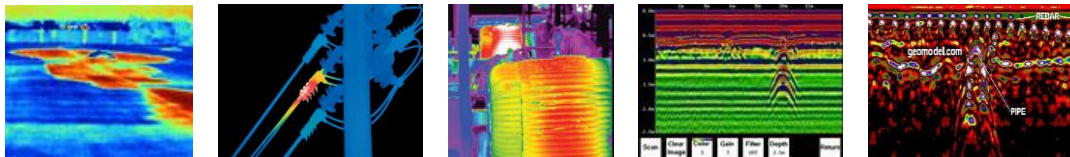
*Material handling and conveying systems for both bulk and unit processes. We offer total system design, component selection, fabrication, and installation.*

**Metal Fabrication: Automotive, Biotech, Chemical, and Industrial**



*Expert, custom equipment and metal fabrication of all types of metal products. We are capable of producing everything from simple platforms to exotic biotech vessels.*

**Thermography/Arc-flash Studies, Vibration Analysis, Ground Penetrating Radar,**



*Solve Electrical, Mechanical, and Facility problems with this non-destructive testing. Locate existing components with Ground Penetrating Radar*

**Crane, Hoist and Operator (Ergonomic) assistance**



*Whether you are modernizing existing equipment, or designing new operator assistance (Ergonomic) systems, we will provide you a practical solution.*

**Thank You for considering The Technology Consortium for your important plant projects...**